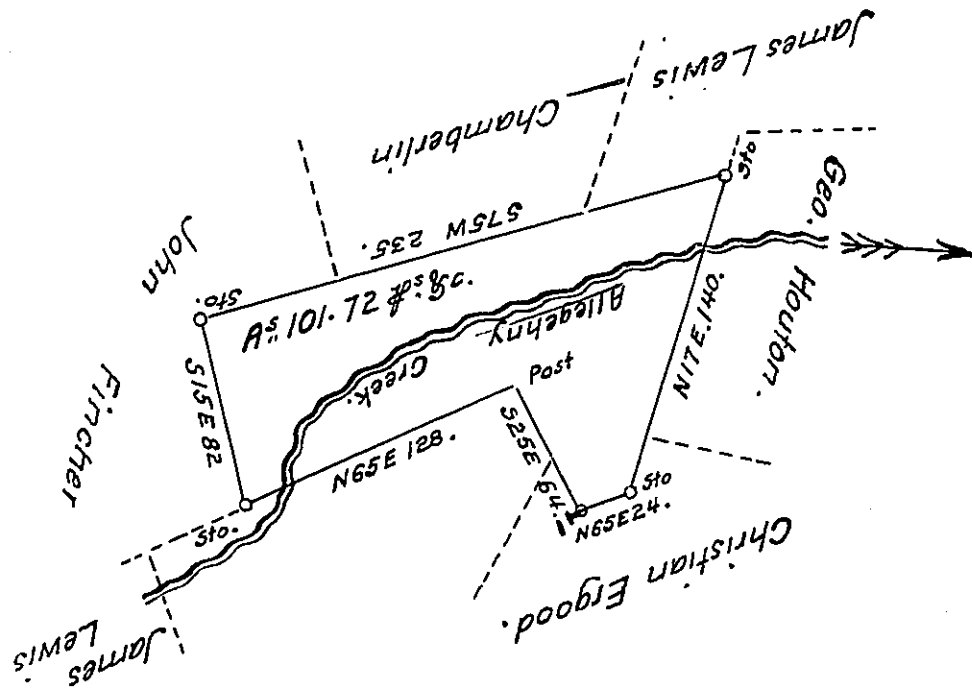


See -A-68-258



Situate in Robeson township, Berks County, Conty.. One hundred and one acres, seventy two perches & allowance of six $\frac{1}{2}$ Ct. Surveyed on a Warrant dated June 23^d. 1749. granted to Richard & James Lewis. (formerly Surveyed to James Lewis) Copied from Henry Vanderslice's. Surveys January 21st 1829.

Gabriel Hiester Esq^r }
 Surveyor General.

Matthias S. Richards D.S.

IN TESTIMONY that the above is a copy of the original remaining on file in the Department of Internal Affairs of Pennsylvania, made conformably to an Act of Assembly approved the 16th day of February, 1833, I have hereunto set my Hand and caused the Seal of said Department to be affixed at Harrisburg, this seventeenth day of December 1908

Henry Howard
 Secretary of Internal Affairs.